

MONTHLY MEMBERSHIP PROGRESS REPORT

District 11 D1

Results as of: 6/30/2025

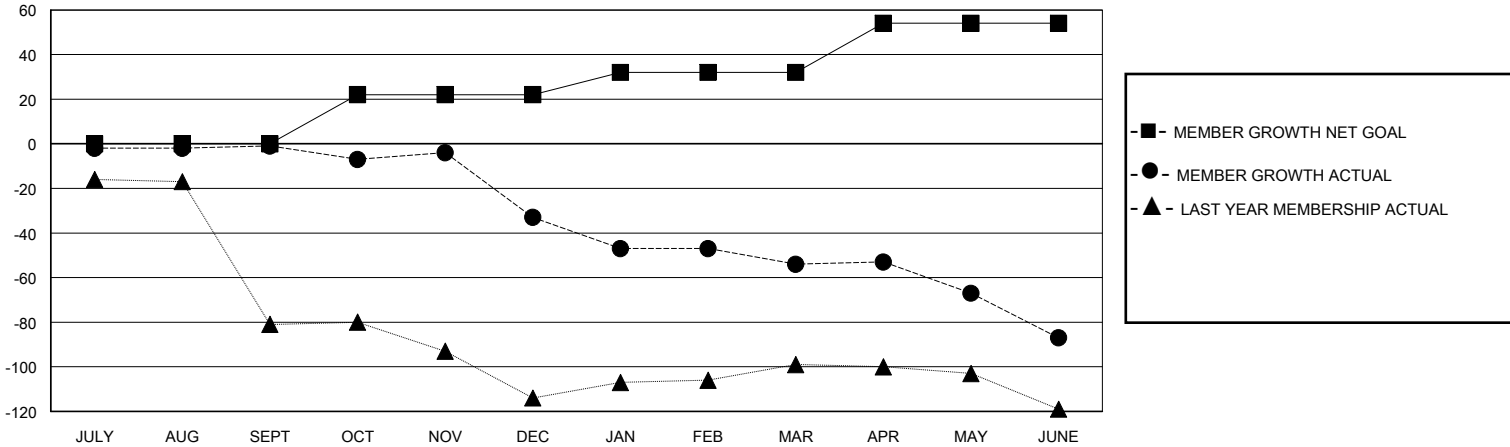
GMT: LOCATION MICHIGAN GMT CA

Clubs				Members			
RESULTS FOR 2024-2025				RESULTS FOR 2024-2025			
QUARTER	NEW CLUB GOAL	NEW CLUBS	DROPPED CLUBS	QUARTER	MEMBER GROWTH NET GOAL	MEMBER GROWTH ACTUAL	DROPPED MEMBERS ACTUAL (including transfers)
JULY/AUG/SEPT	0	0	0	JULY/AUG/SEPT	0	14	15
OCT/NOV/DEC	0	0	0	OCT/NOV/DEC	22	19	49
JAN/FEB/MAR	0	0	0	JAN/FEB/MAR	10	11	30
APR/MAY/JUNE	1	0	0	APR/MAY/JUNE	22	32	60

GOALS AND ACTUAL NEW CLUBS CUMULATIVE



GOALS AND ACTUAL MEMBERS CUMULATIVE



DROPPED CLUBS: 0		15 CLUBS OF 34 ADDED 1 OR MORE NEW MEMBERS	<u>GENDER DISTRIBUTION</u>	
			MALE	584 (67.99%)
			FEMALE	275 (32.01%)
<u>DROPPED MEMBERS</u>		<a href="#">CLICK HERE FOR CUMULATIVE MEMBERSHIP DATA</a>		
DECEASED	32		TOTAL FAMILY UNIT MEMBERS 209	
CLUB CANCELLED	0			
OTHER	122		FAMILY MEMBERS PAYING HALF DUES 107	
TOTAL	154			